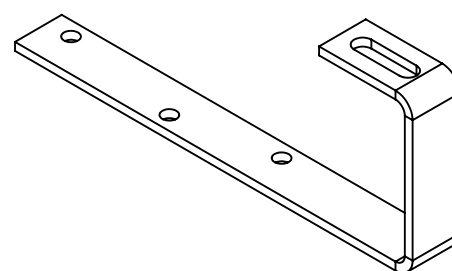
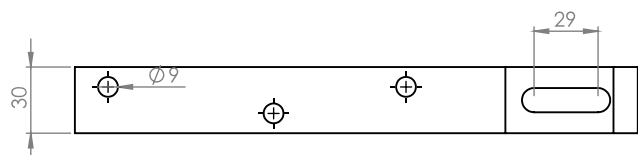


TECHNICAL CARD

Roof hook

J-type



KTM	Z-BD-2004
MATERIAL	Sainless steel, 1.4016,
WEIGHT	0,44 kg,
SURFACE FINISH	Mill finish
PURPOSE	The hook is designed for mounting the structure for panels photovoltaic panels on pitched roofs covered with shingles or roofing felt.
MOUNTING HOLES	Top bean hole - 40x11 mm; lower holes - $\varnothing 9$ mm